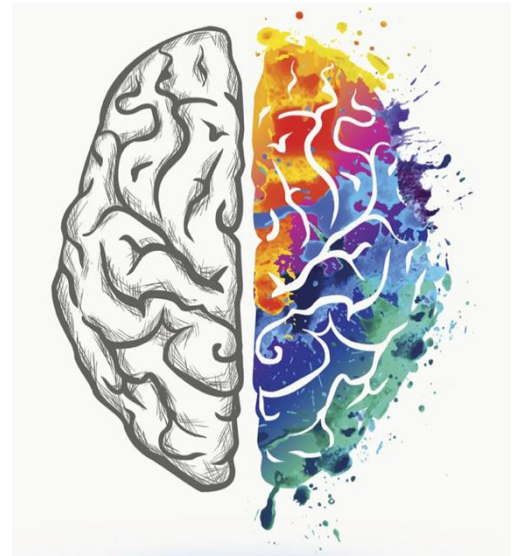


Are you curious about how events in your life may be impacting how you experience emotions?

We're conducting a research study to understand the emotional experience of individuals whose mothers were incarcerated while they were an adolescent. You are eligible to participate in this study if you are:

- Over the age of 13
- You experienced the incarceration of your mother between the ages of 11 and 17
- The incarceration of your mother must have been greater than a period of 6 months, but could have occurred in either a jail or prison
- Your mother may still be incarcerated or she may be released at the time you complete the survey



Participation includes completing a brief survey that will take approx. 10-15 minutes. To express our gratitude, after completing the survey participants will have the opportunity to enter their email in a raffle to receive 1 of 5 \$50 Amazon gift cards.

Are you eligible? If so, please scan the QR code below to complete the survey, or email the researcher to get the survey link: sschindler@wi.edu



Please note that participants under the age of 18 will need a parent/guardian to sign a consent form (attached to the survey) giving permission to participate. If you are unsure if you meet the requirements or want more information about the study, please contact the researcher, Stephanie Schindler, at sschindler@wi.edu or (415) 857-0947. You may also contact Dr. Sydnie Yoo, who is chairing this study, at syoo@wi.edu. This study is part of my dissertation research which fulfills the requirements to obtain a doctorate in clinical psychology from The Wright Institute in Berkeley, CA.

